



Swoon
SEWING PATTERNS

An easy to sew reversible bag with a casual boho vibe, Summer includes four slip pockets and a long crossbody strap. Two bag sizes are included in this pattern (*large shown*).

Large size:

11" wide
10" tall
11" deep
18" drop

Mini size:

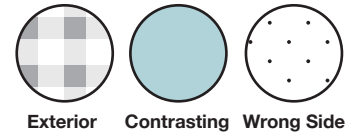
9" wide
8" tall
9" deep
17" drop

summer

FESTIVAL SLING

When printing, do not select "Fit to Printable Area" or enlarge/shrink in any way.
Always print at "Actual Size" or 100%.

www.swoonpatterns.com • Feel free to sell your bags made with this pattern. Copyright 2018 Swoon Sewing Patterns



Instructions & Pattern

Materials Needed:

- 1 yard 44” wide quilting or decor weight **exterior fabric**
- 1/2 yard 44” wide quilting or decor weight **contrasting fabric**
- 1 1/4 yards 44” wide quilting weight **lining fabric** (*1 yard for Mini*)
- 4 1/2 yards fusible woven interfacing (*Pellon Shapeflex SF101*) (*3 yards for Mini*)
- Erasable marking pen
- Coordinating thread



1) PREPPING

Print the pattern at “Actual size” or “100% scale”. For the Large size, print pages 6-10. For the Mini size, print pages 11-14. Cut out all paper pattern pieces along the solid black lines. Tape all applicable pieces together, butting the black lines at the matching letters.

On the wrong side of the fabric, trace and cut the pieces from the **exterior fabric**, **contrasting fabric**, and **lining fabric**, as instructed on each pattern piece. The edges marked “FOLD” should run along the straight grain of the fabric. Repeat to cut the woven interfacing.

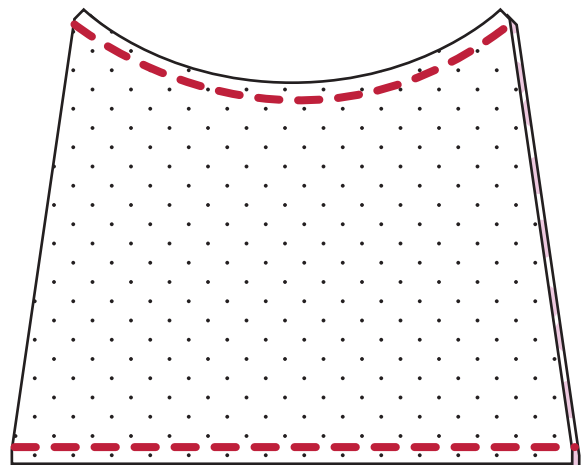
Fuse woven interfacing to the wrong side of all panels *except for* four of the lining **Pocket Panels**.

2) POCKETS

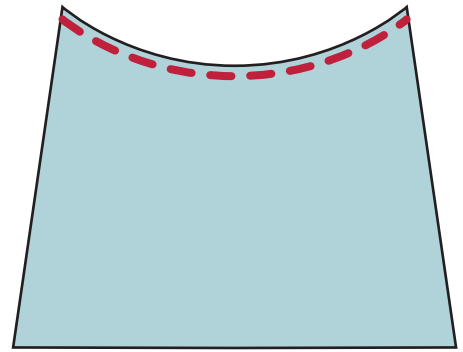
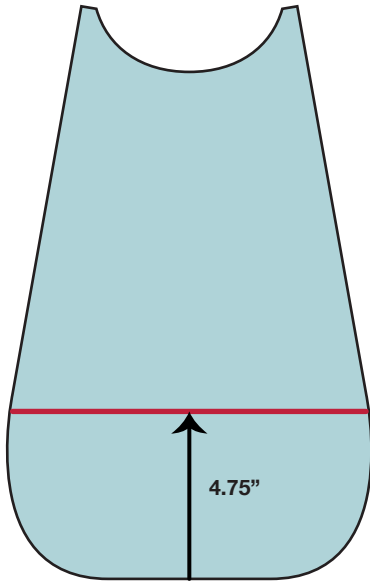
Pin a **contrasting Pocket Panel** to a **lining Pocket Panel** **without interfacing**, right sides together and matching all raw edges. Sew along the top curved edge at 1/4” seam allowance. Then, sew along the bottom straight edge at 1/4” seam allowance.

Clip into the curved seam allowance a few times, almost up until the stitching. Turn the pocket right side out and press well.

Repeat to assemble the second contrasting pocket. Then, repeat to assemble the two lining pockets, by sewing the interfaced **lining Pocket Panels** to the **lining Pocket Panels** **without interfacing**.

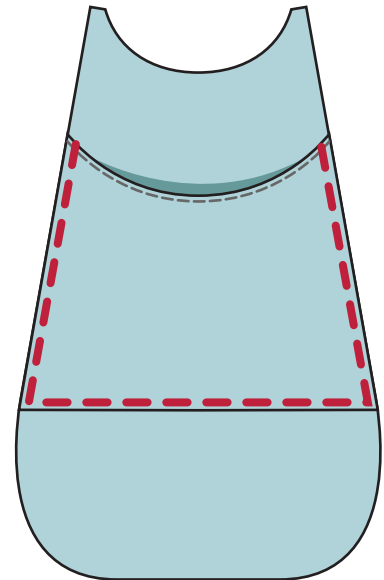


Top stitch only along the top curved edge of each pocket.



On the right side of all four **Side Panels**, mark a horizontal line that is 4.75" up from, and parallel to, the bottom edge. *(3.75" for the Mini)*

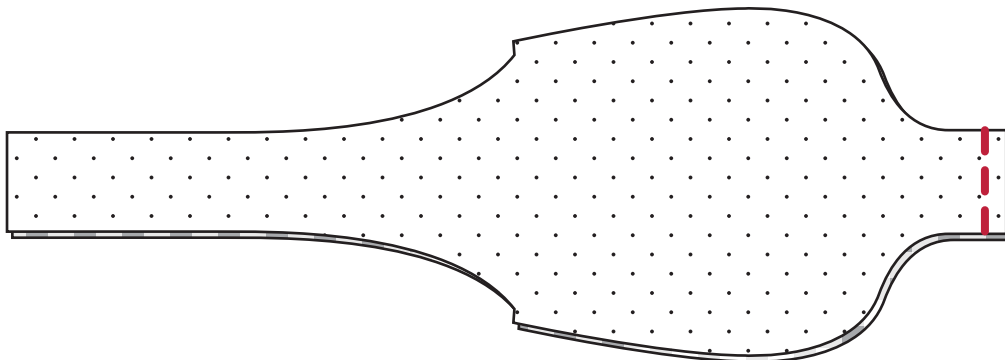
Pin a **contrasting pocket**, lining side down, to the right side of a **contrasting Side Panel**. Match the bottom edge of the pocket to the marked line and the raw edges of the pocket to the side edges of the **Side Panel**. The pocket will be wider than the panel at the top. Top stitch along the bottom edge and both raw side edges to attach, about 1/8" from the edge.



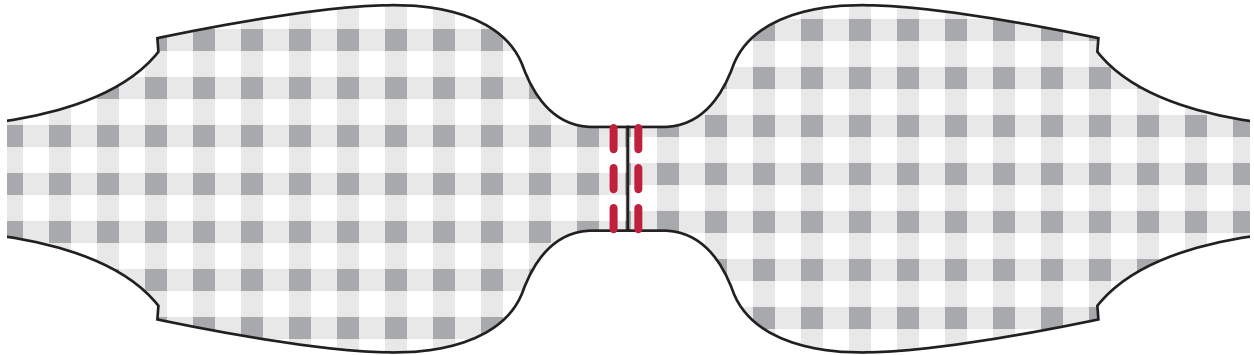
Repeat to sew the remaining **contrasting pocket** to the other **contrasting Side Panel**. Then, sew the **lining pockets** to the **lining Side Panels**.

3) ASSEMBLY

Pin the two **exterior Main Panels** right sides together and matching all edges. Sew along the bottom straight edge only at 1/2" seam allowance.

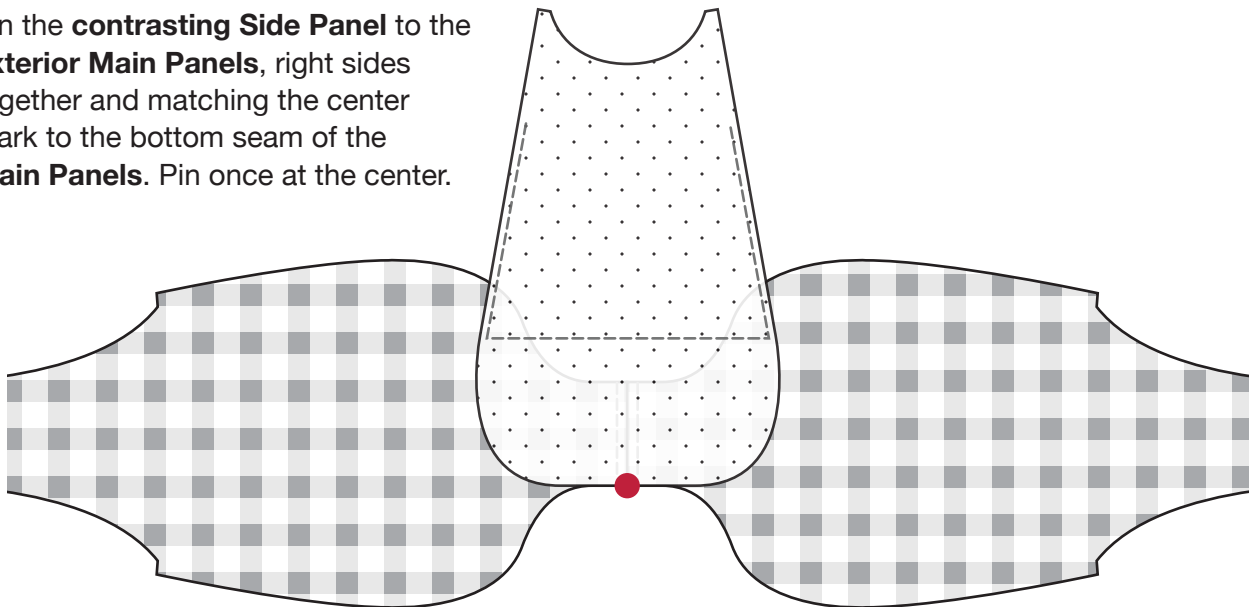


Press the seam allowance open and top stitch along both sides of the seam, about 1/4" from the seam.

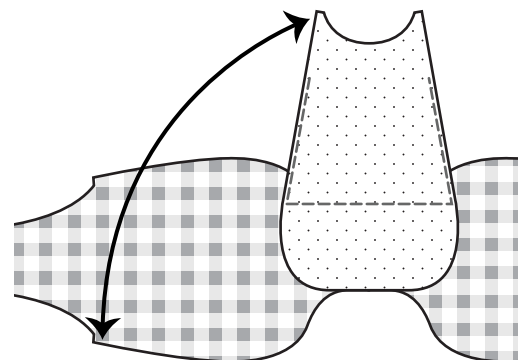


Fold a **contrasting Side Panel** in half to find and mark the center along the bottom edge.

Pin the **contrasting Side Panel** to the **exterior Main Panels**, right sides together and matching the center mark to the bottom seam of the **Main Panels**. Pin once at the center.



Pin the top left corner of the **Side Panel** to the top left corner of the respective **Main Panel**, right sides together. Starting at the center pin, work your way up the left side of the **Side Panel**, matching the raw edges and pinning the **Side Panel** to the **Main Panel** every inch or so until you reach the top pin. Repeat to pin the other half of the **Side Panel** to the other **Main Panel**.



With the **Main Panels** wrong side up, sew along the pinned edge at 1/2" seam allowance. Back stitch at start and stop.

Clip into the seam allowance a few times, about 3/8" in, along the curves. Press the seam allowance toward the **Side Panel**. With the panels right side up, top stitch along the seam, about 1/4" from the seam, through the **Side Panel** and seam allowance.

Repeat the last three paragraphs to sew the remaining **contrasting Side Panel** to the opposite edge of the **Main Panels**.

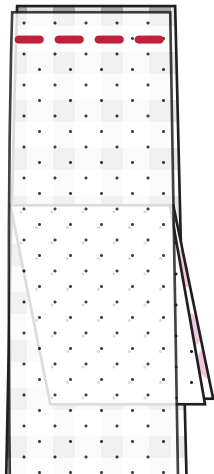
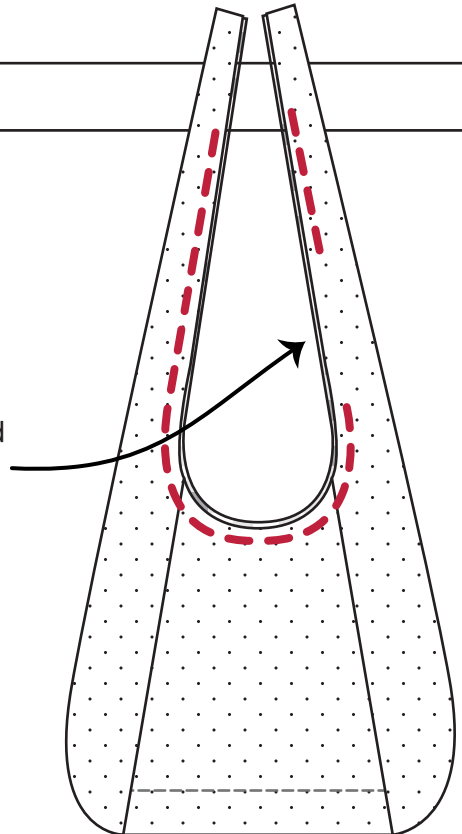
Repeat Step 3 to assemble the lining, sewing the **lining Side Panels** to the **lining Main Panels**.

4) FINISH

With the **exterior** of the bag right side out and the **lining** wrong side out, place the **exterior inside the lining**. Match all raw edges and seams together and pin every inch or so, the entire way up the strap. Starting 4" from a raw end of the strap, sew at 1/2" seam allowance, down the strap, across the top of a **Side Panel**, and up the other strap, stopping 4" from the end. Repeat to sew down the other side of the strap, across the other **Side Panel** and back up, but leave a 6" opening along one edge of a **Main Panel**.

Trim the seam allowances down to about 1/4", only along the stitching.

Turn the bag right side out through the opening. Fold the raw edges inside the opening 1/2" and press, then pin the opening closed matching the folds together.



Pin the raw ends of the **exterior** strap right sides together and matching all edges. Sew along the short edge only at 1/4" seam allowance. Pin the raw ends of the lining strap right sides together and matching all edges and sew at 1/4" seam allowance. Press the seams.

Fold the long edges of the unsewn sections of the strap under 1/2", both exterior and lining, and press, then pin closed.

Top stitch along all edges of the bag, along the top and up the strap, about 1/8" from the edge. This will finish the opening and the raw edges along the strap.

Your Summer Festival Bag is finished!

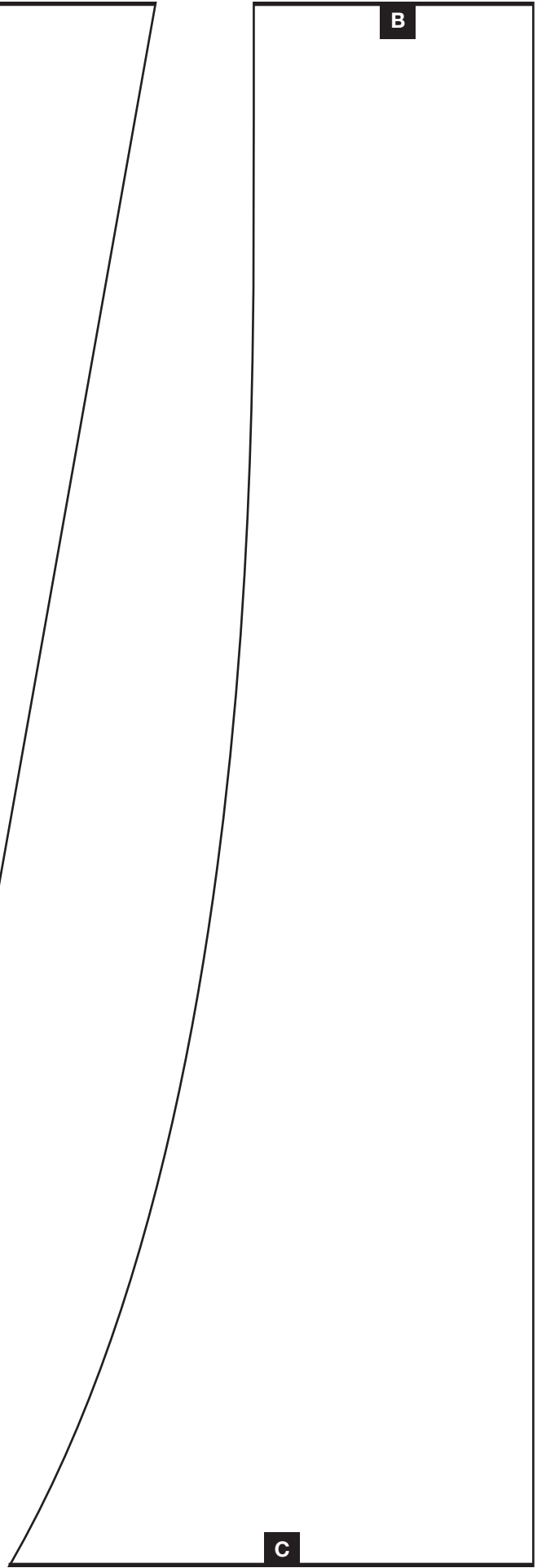
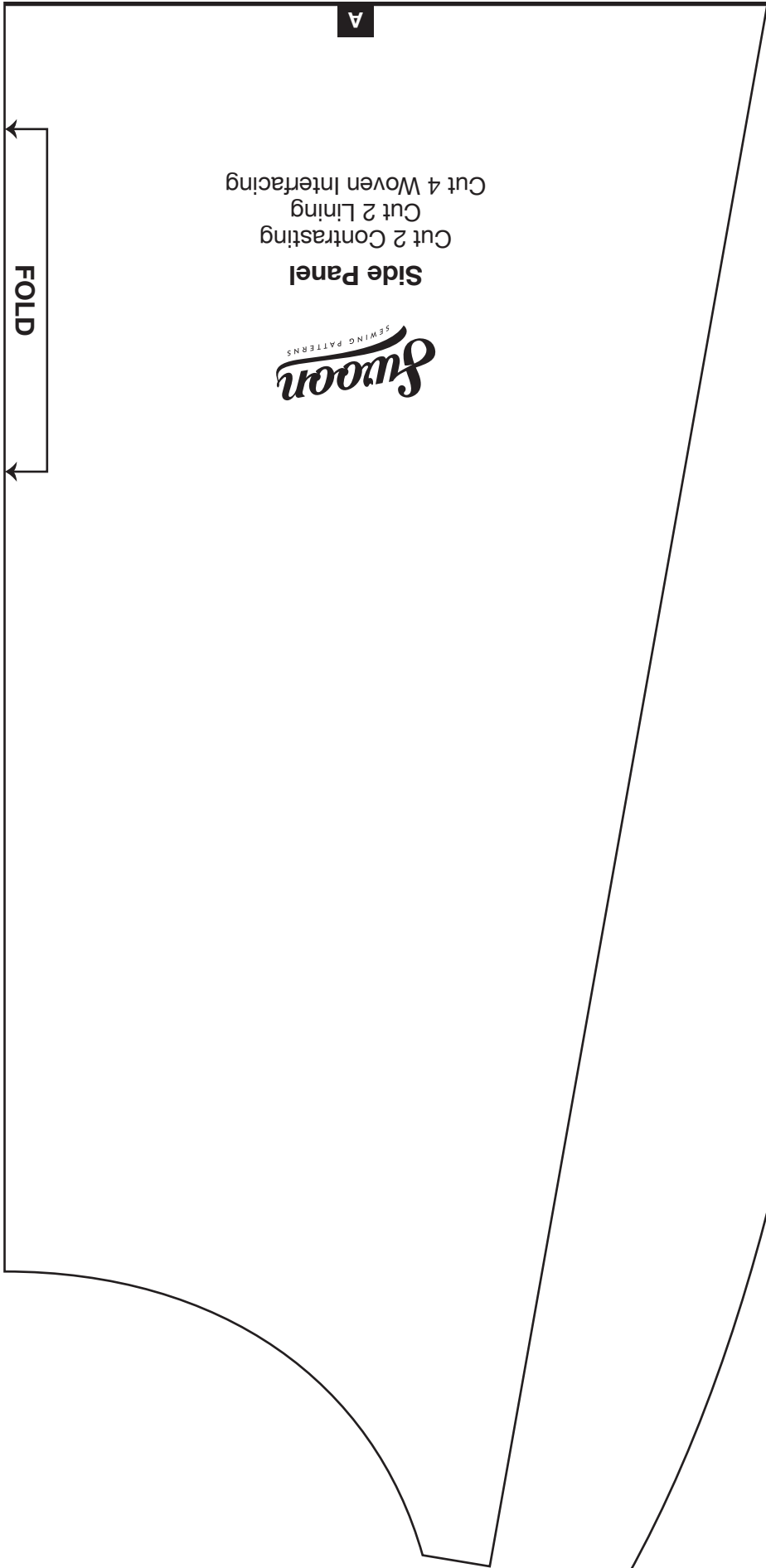
3"

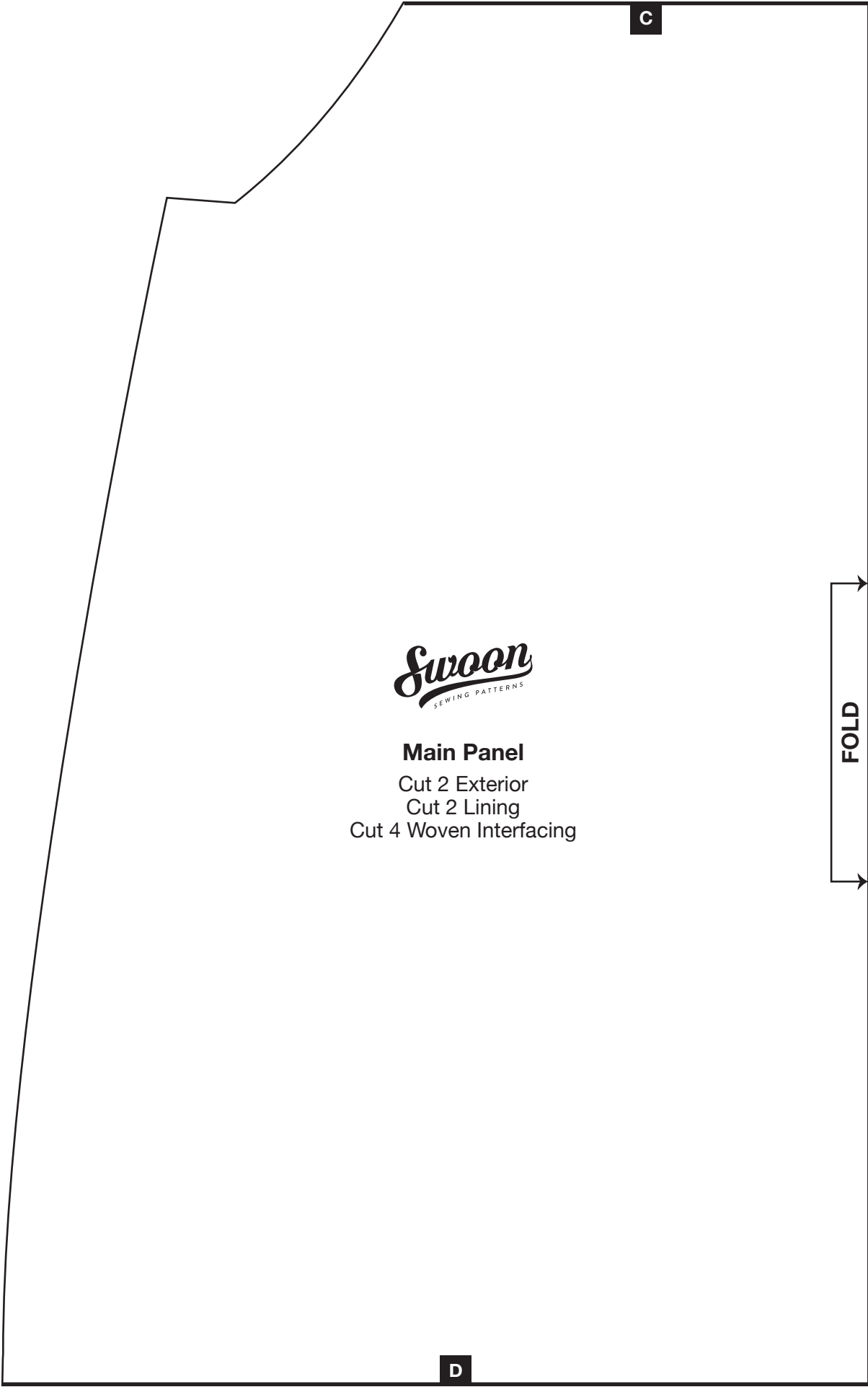
This is a test square to ensure the pattern printed at the correct size.

summer
FESTIVAL SLING
AREA

A

B





C

Swoon
SEWING PATTERNS

Main Panel

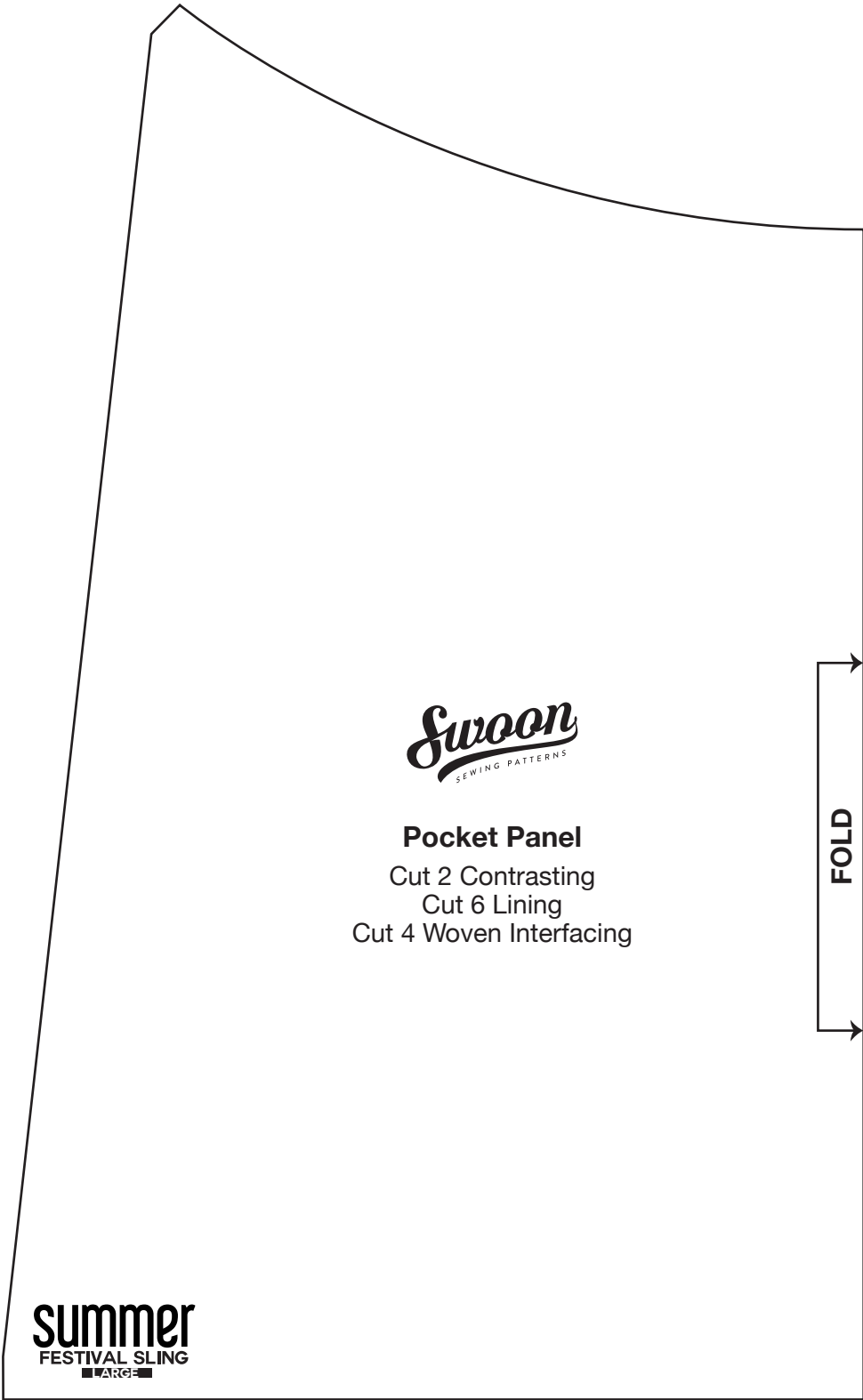
Cut 2 Exterior
Cut 2 Lining
Cut 4 Woven Interfacing

FOLD

D

D

summer
FESTIVAL SLING
■▲◇■



Swoon
SEWING PATTERNS

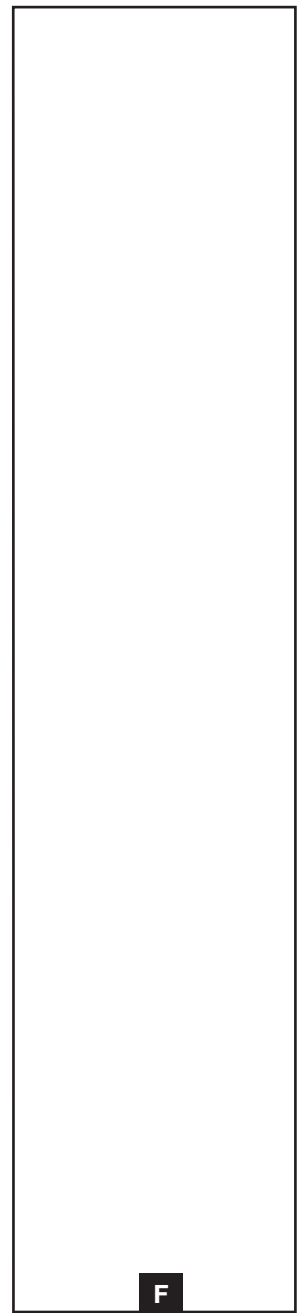
Pocket Panel
Cut 2 Contrasting
Cut 6 Lining
Cut 4 Woven Interfacing

FOLD

summer
FESTIVAL SLING
■ ■ ■ ■ ■ ■ ■ ■ ■ ■

3"

This is a test square to ensure the pattern printed at the correct size.



E

F

Swoon
SEWING PATTERNS

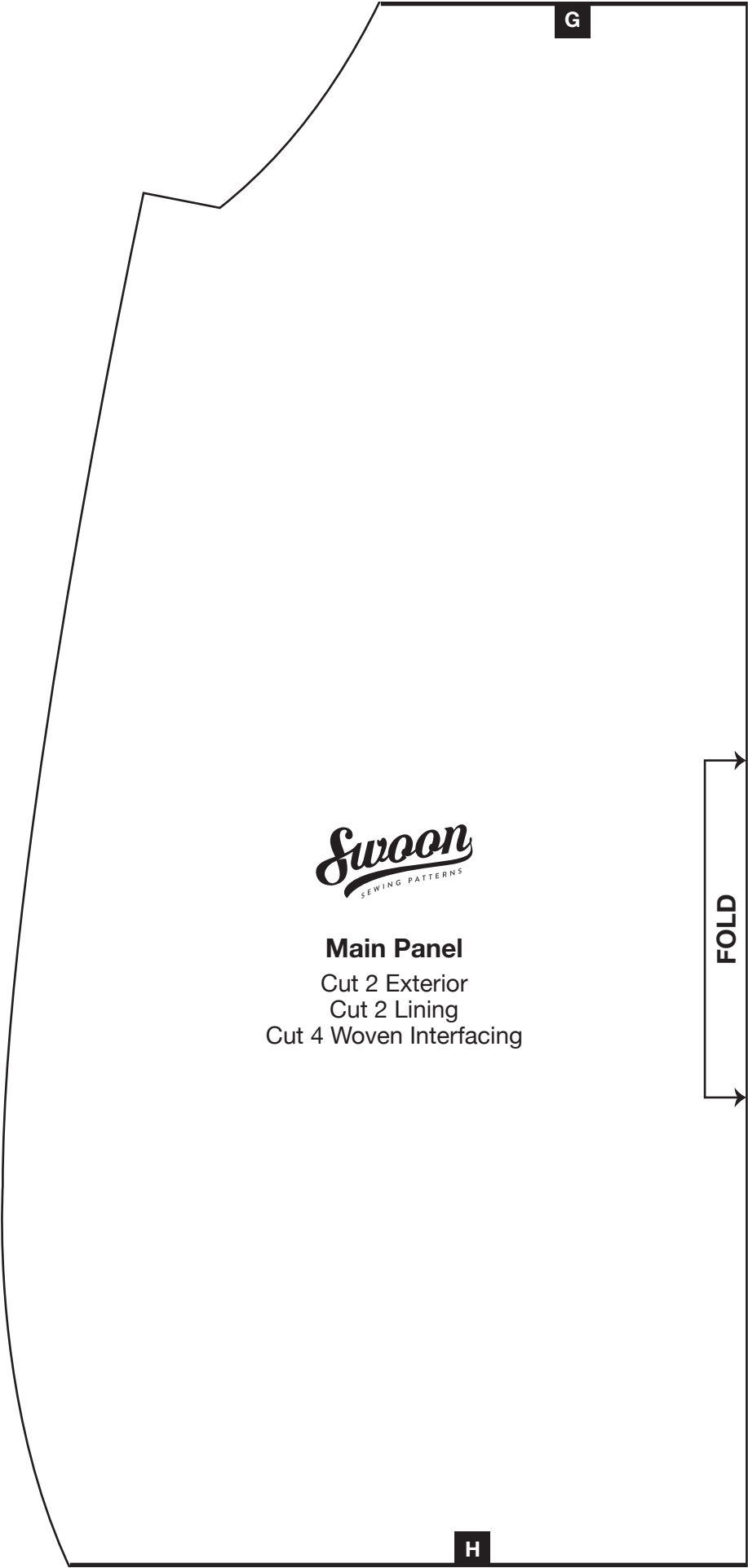
Side Panel

Cut 2 Contrasting
Cut 2 Lining
Cut 4 Woven Interfacing



summer
FESTIVAL SLING
MINI

G



G

Swoon
SEWING PATTERNS

Main Panel
Cut 2 Exterior
Cut 2 Lining
Cut 4 Woven Interfacing

FOLD

H

H

summer
FESTIVAL SLING
MINI

Swoon
SEWING PATTERNS

Pocket Panel
Cut 2 Contrasting
Cut 6 Lining
Cut 4 Woven Interfacing

FOLD

summer
FESTIVAL SLING
MINI